



SNAGGIT[®]

THE LEADER IN SCREEN CAPTURE

Enterprise Installation Guide
Version 8.0

Registered Trademarks

TechSmith Corporation provides this manual "as is", makes no representations or warranties with respect to its contents or use, and specifically disclaims any expressed or implied warranties of merchantability or fitness for any particular purpose.

TechSmith Corporation reserves the right to make changes to the content of this manual, at any time, without obligation to notify any person or entity of such changes.

The software described in this document is furnished under a license agreement. The software may be used or copied only in accordance with the terms of the agreement. It is against the law to copy the software on any medium except as specifically allowed in the license agreement.

No part of this manual may be reproduced or transmitted in any form or by any means, electronic or mechanical, including photocopying, recording, or information storage and retrieval systems, for any purpose other than the purchaser's personal use, without the express written permission of TechSmith Corporation.

Copyright © 1990-2006 TechSmith Corporation.
All Rights Reserved. Printed in the United States of America.

Trademarks:

TechSmith, SnagIt, and Camtasia are registered trademarks and Camtasia Studio is a trademark of TechSmith Corporation.

All other registered trademarks and trademarks are the property of their respective companies. All rights reserved.

Contents

SnagIt Enterprise Installation	2
Overview of Enterprise Installation	2
Preparing for Enterprise Installation	3
Step 1: Creating a Central Installation Directory	3
Step 2: Creating the Custom Installation.....	3
Basic Custom Installation.....	3
Advanced Custom Installation	7
Installation	11
Managed Installation Using Group Policy in Windows 2000 Server	11
Distributing SnagIt Manually	16

SnagIt Enterprise Installation

Overview of Enterprise Installation

Welcome to the *SnagIt Enterprise Installation Guide*. This is a comprehensive guide on how to make the enterprise installation run smoothly for *SnagIt* 8.0.

SnagIt has become an indispensable utility for organizations of all types and sizes. Just like an e-mail program or a word processing program, every user can benefit from *SnagIt*'s capabilities to capture and share information. One of the growing challenges of enterprise-wide applications, such as *SnagIt*, is deploying the software to all of the personal computers.

The process for enterprise installation of *SnagIt* consists of the following steps:

1. Prepare for the enterprise installation.
 - a. Create a central installation directory.
 - b. Create the custom installation.
2. Install *SnagIt* in one of the following ways:
 - A managed installation across the organization (recommended).
 - Manual installations on each machine in the organization.

Preparing for Enterprise Installation

Before starting the enterprise installation of *SnagIt* across your organization, you first need to do the following:

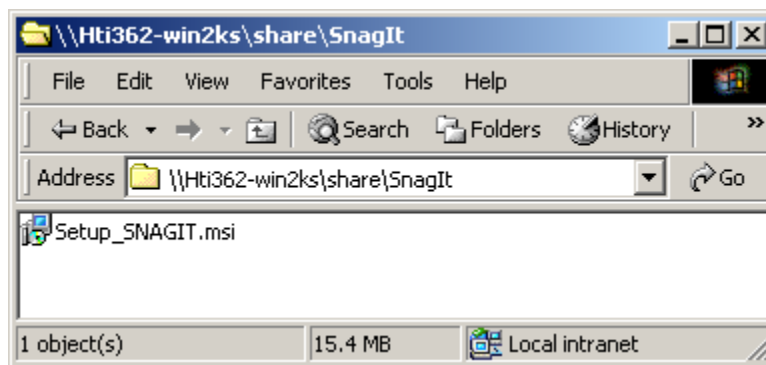
1. Create a central installation directory.
2. Create the custom installation using basic customizations and, if needed, advanced customizations.

Step 1: Creating a Central Installation Directory

A central installation directory on a network share (e.g., \\machine\share\SnagIt) is required for most software deployment schemes, including SMS, group policy, and manual deployment.

Create a central installation directory on a public network share and set the appropriate permissions.

Note: Some deployment tools, such as Windows 2000 Server group policy, require that the client's *machine* account have read access to the file share, because the software may be installed before any user logs on to the system.



Step 2: Creating the Custom Installation

When creating the custom installation of *SnagIt* for your organization, you have two different levels of customization: basic and advanced.

Basic Custom Installation

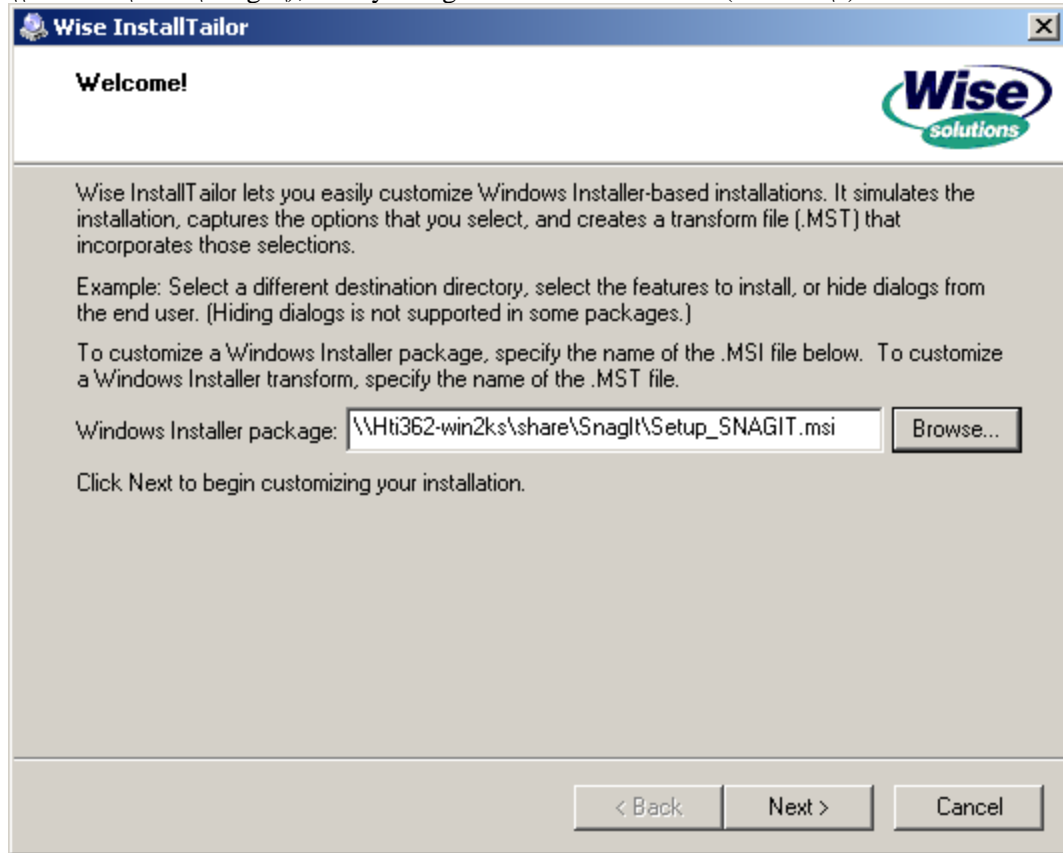
SnagIt is a standard Windows Installer-based package. These packages can be customized using transforms (MST files). Many commercial and free tools are available to generate these transforms. The procedure described below uses a free tool, *Wise InstallTailor*.

Wise InstallTailor is a simple dialog-based tool that records user choices at each of the installation dialogs and uses them to generate an MST file. You can choose to register *SnagIt* during installation with a specific key you provide or to change which features are installed. The resulting transform can then be applied to the *SnagIt* installer to distribute any site-specific customizations.

Note: To use *Wise InstallTailor*, you must be on a machine that does not currently have *SnagIt* installed on it.

The following procedure describes how to use *Wise InstallTailor* to customize the installation of *SnagIt*:

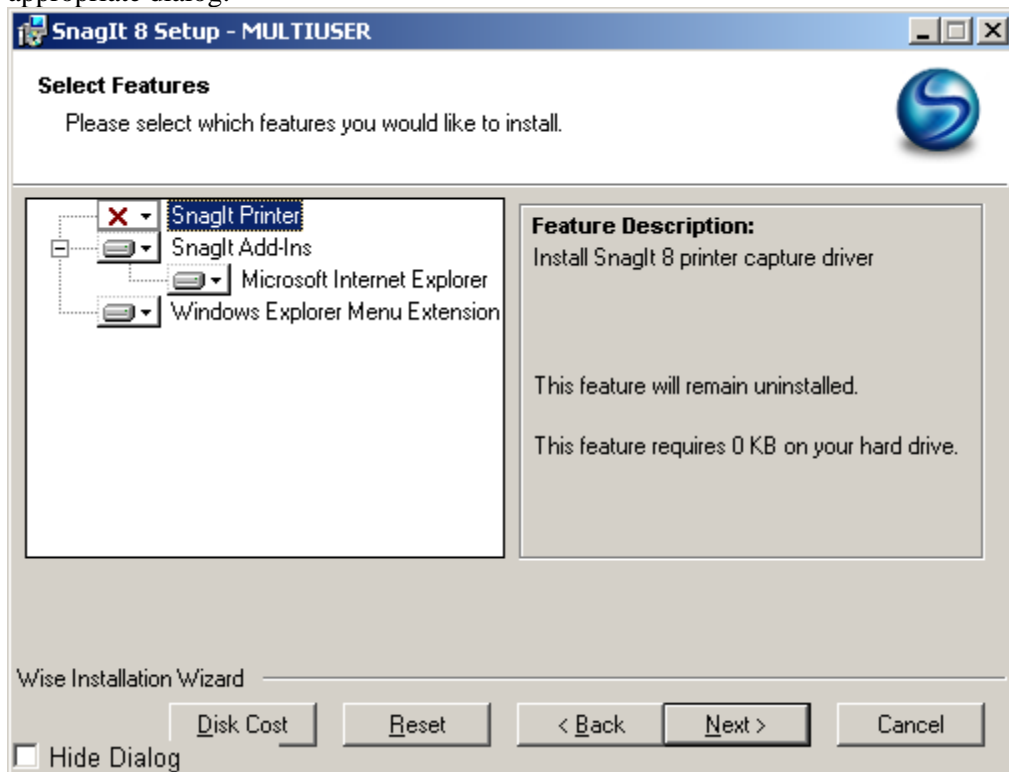
1. Start *Wise InstallTailor*.
2. Browse to the *SnagIt* MSI file on the file share.
Be sure to browse to the installation package using the full UNC path (e.g., \\machine\share\SnagIt\), not by using a network drive letter (like “H:\”).



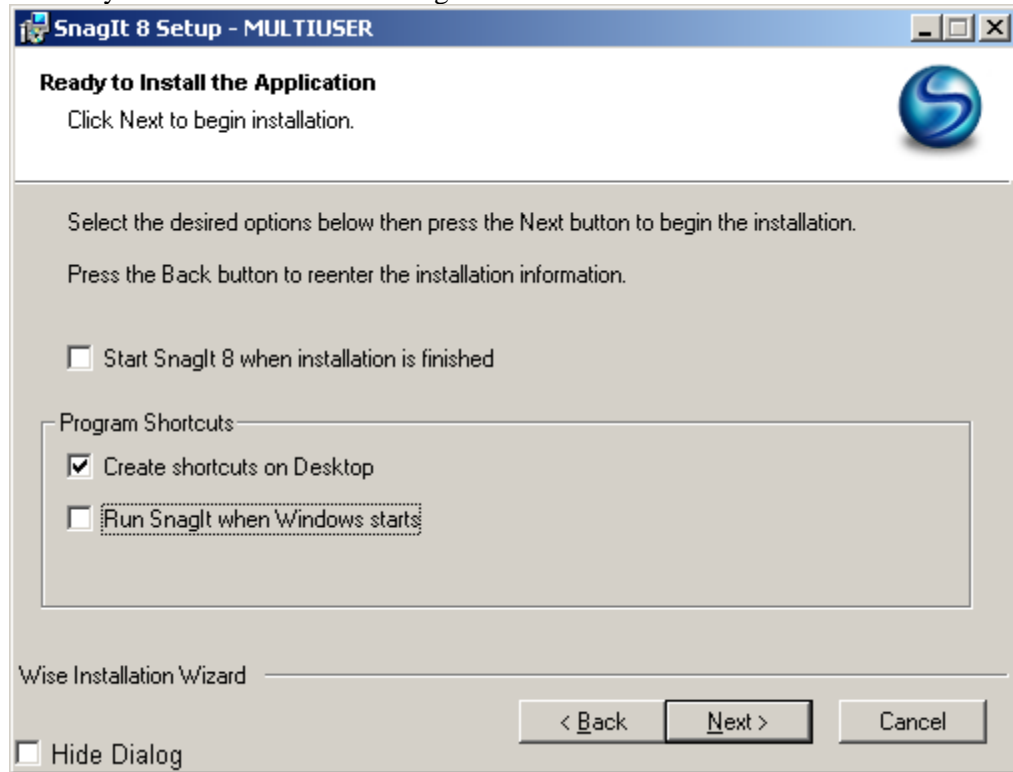
3. Click **Next**. The main *SnagIt* installation dialog displays:
 - If you are using the **recommended method** of enterprise installation using a Group Policy, the install will be “invisible” and no user interface is shown to the user. You do not need to check the *Hide Dialog* check boxes in the lower left corner of each dialog.
 - If you are planning on **manual installation**, you need to check the *Hide Dialog* check boxes in the lower left corner of each dialog.



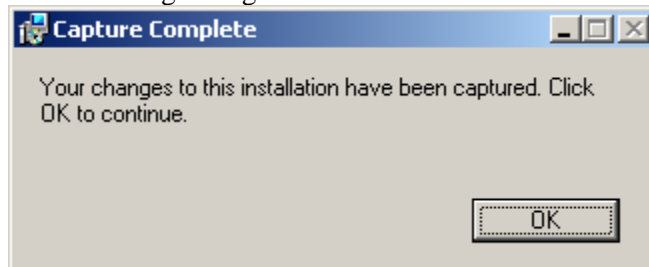
4. Make any needed customizations to each of the user dialogs.
 - For instance, if the *SnagIt Printer* should not be installed, de-select that feature on the appropriate dialog:



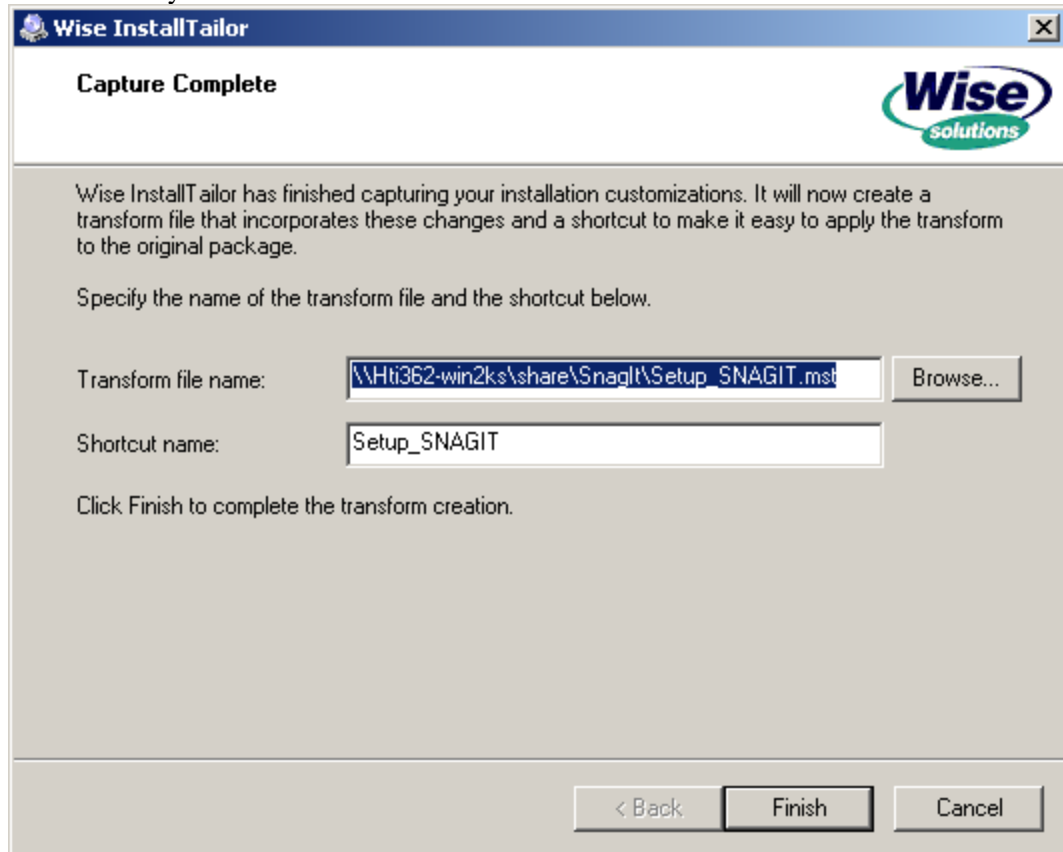
- You may also choose not to run SnagIt when Windows starts:



- Wise InstallTailor* remembers your choices in the dialogs and uses that information to create a transform.
- The following dialog is shown when the installer is finished:



- Choose an appropriate name for the transform and save it on the same file share in the same directory as the installer:



- Click **Finish** to exit *Wise InstallTailor*.

Advanced Custom Installation

If the options provided in the installer are not enough, you can further customize *SnagIt's* settings using a "SnagIt.reg" file. Most users will not need to use the *SnagIt.reg* functionality. If you do not require advanced customizations, skip to the installation procedures in the next section:

Installation on page **11**.

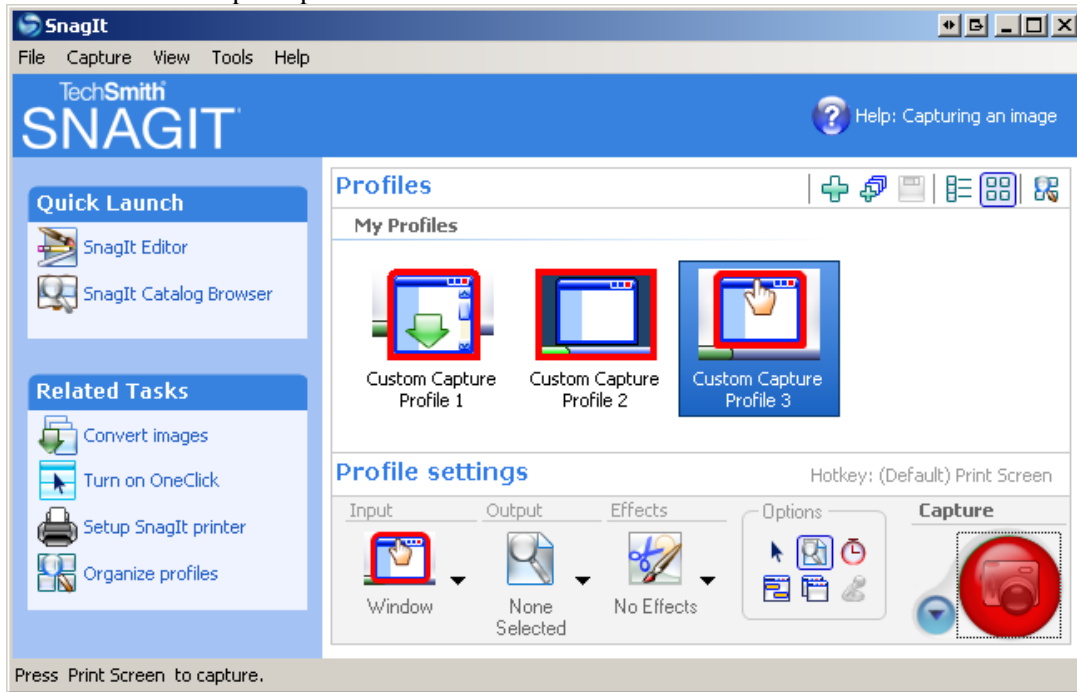
SnagIt32.exe will import program configuration settings from file named *SnagIt.reg* in the same directory. This file can contain any user customizations, including custom profiles, program preferences, hotkeys, automatic update settings, etc.

Note: SnagIt will automatically import these settings **ONLY** the first time it is run by each user. After that, the user will be able to change their own settings however he or she wishes.

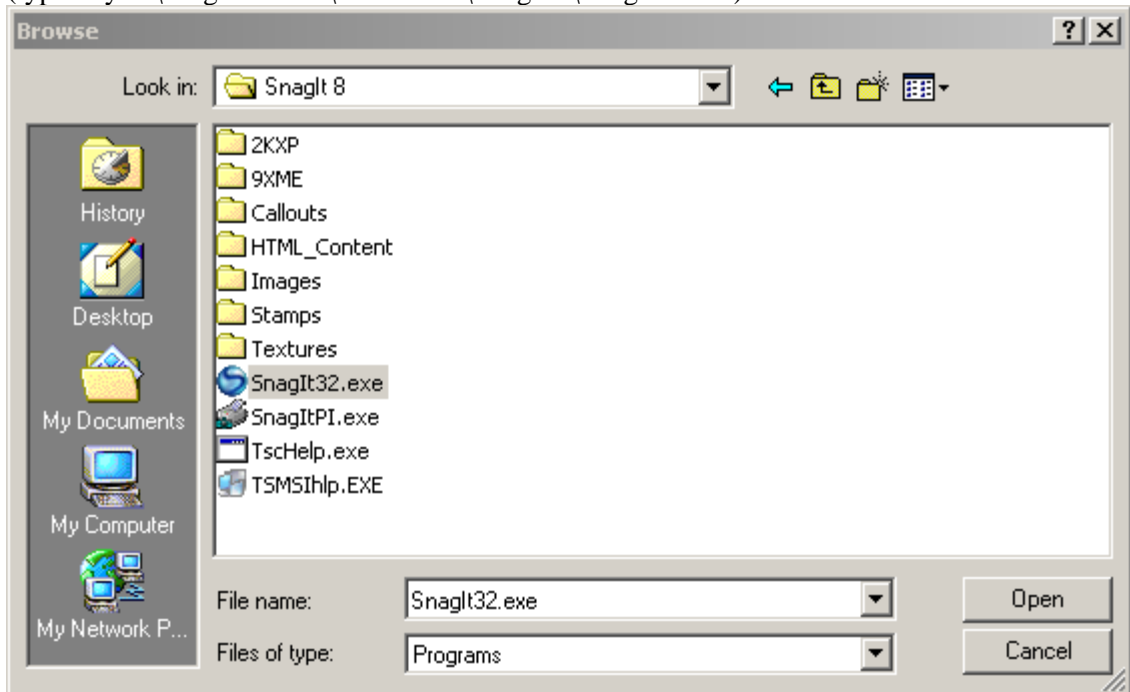
Program configuration settings can be exported from *SnagIt* using the `/e` command-line switch, as described in the following procedure.

To distribute site-specific customizations using the *Snagit.reg* file:

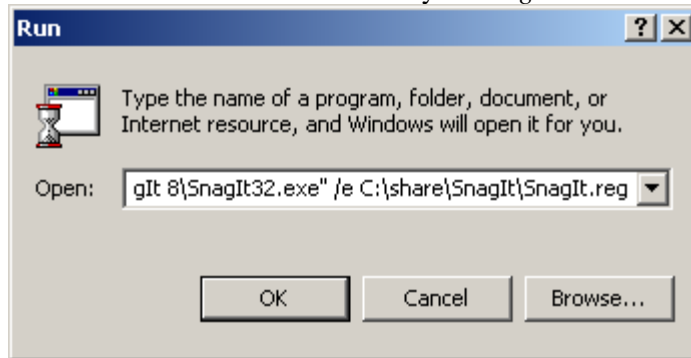
1. First make any desired changes in an installation of *Snagit*. For example, you may wish to create custom capture profiles:



2. From the **File** menu, choose **Exit** to close *Snagit* completely. It is important that you completely exit *Snagit* or it will not save your settings properly. Make sure to check that it has not been minimized to the system tray.
3. On the Windows **Start** menu, click **Run**. Click **Browse** and browse to *Snagit32.exe* (typically C:\Program Files\TechSmith\Snagit 8\Snagit32.exe):



- Append “/e” and the path to where you would like the output *SnagIt.reg* to be saved. It will need to be in the same directory as *Snagit32.exe*.



The generated *Snagit.reg* is compatible with the *Regedit.exe* program in Windows. It can also be edited using any text editor.

Various capture modes and other features of SnagIt can be completely disabled by editing *Snagit.reg* directly and distributing those changes via *Snagit32.exe*'s settings import feature.

See the list below in **Features that Can Be Disabled** section for a complete list of the features that you can disable through the *Snagit.reg* file.

Examples

To disable image capture support entirely for each user, add these lines to *Snagit.reg*:

```
[HKEY_CURRENT_USER\Software\TechSmith\Snagit\8\]
"NoImageCaptureSupport"=dword:00000001
```

To disable both image and printer capture support, add these lines to *Snagit.reg*:

```
[HKEY_CURRENT_USER\Software\TechSmith\Snagit\8\]
"NoImageCaptureSupport"=dword:00000001
"NoPrinterCaptureSupport"=dword:00000001
```

Features that Can Be Disabled

The following list contains the features that can be disabled through the *Snagit.ref* file:

- **To disable image capture:**
Set `NoImageCaptureSupport` to `dword:00000001`
- **To disable text capture:**
Set `NoTextCaptureSupport` to `dword:00000001`
- **To disable video capture:**
Set `NoVideoCaptureSupport` to `dword:00000001`
- **To disable web capture:**
Set `NoWebCaptureSupport` to `dword:00000001`
- **To disable printer capture:**
Set `NoPrinterCaptureSupport` to `dword:00000001`
- **To disable prompting for SnagIt Printer installation:**
Set `NoPrinterInstallationSupport` to `dword:00000001`

- **To disable automatic update reminders and support:**
Set `ReminderEnable` to `dword:00000000`
- **To enable automatic update reminders and support:**
Set `ReminderEnable` to `dword:00000001`
- **To disable automatic update prompting and checking for new versions:**
Set `NoAutoUpdateSupport` to `dword:00000001`
- **To disable “Register SnagIt” on-line dialog: Set**
`NoRegistrationDialogSupport` to `dword:00000001`

Installation

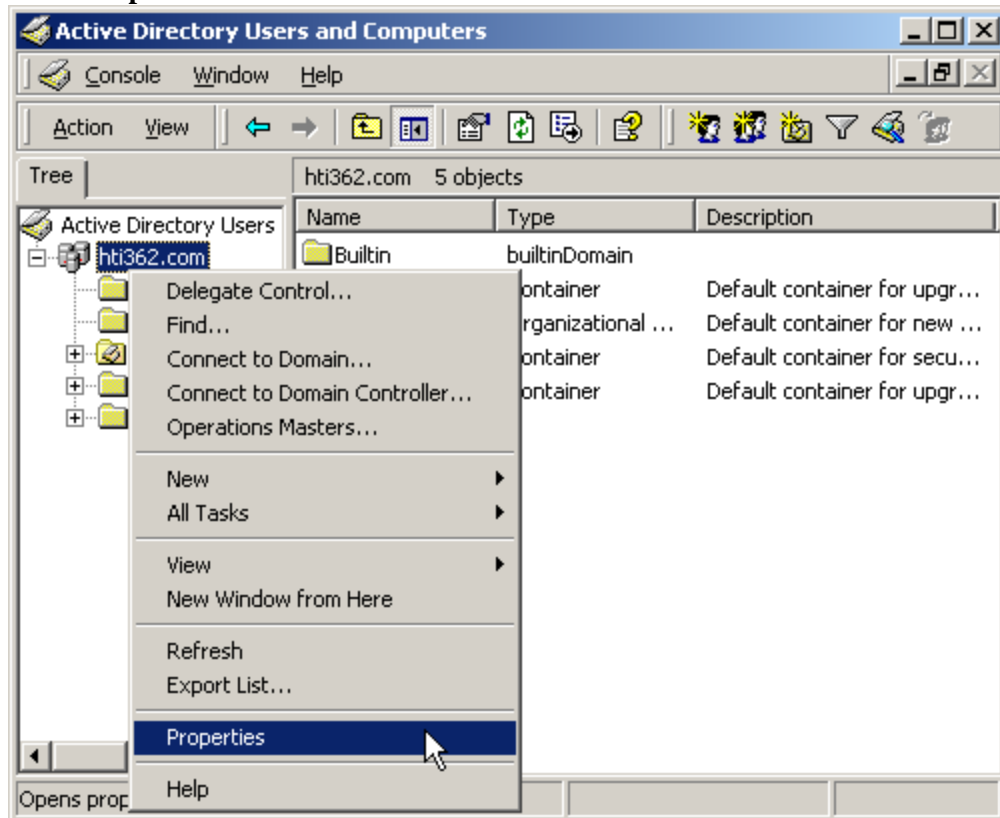
You can complete enterprise installation of *SnagIt* across your organization using one of the following procedures:

- A managed installation across the organization (recommended method).
- Manual installations on each machine in the organization.

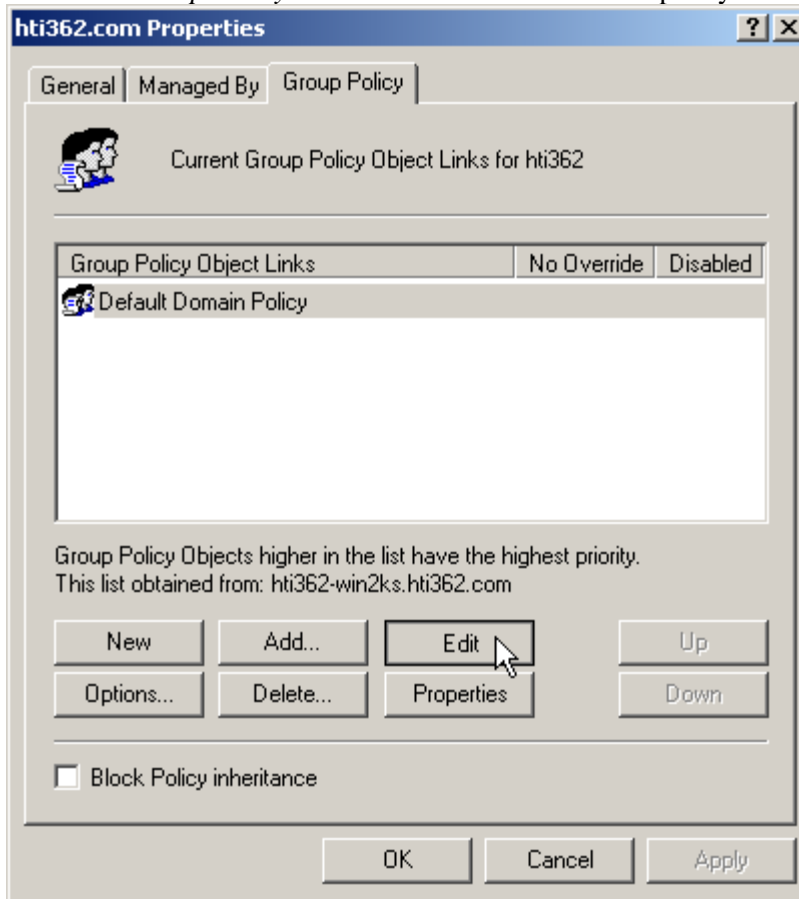
Managed Installation Using Group Policy in Windows 2000 Server

Using the Windows 2000 (or 2003) Server's Group Policy manager, it is easy to deploy *SnagIt* to everyone in your organization. You should feel free to use whatever deployment method you are used to for MSI installs, but this is one method we know works well and have tested.

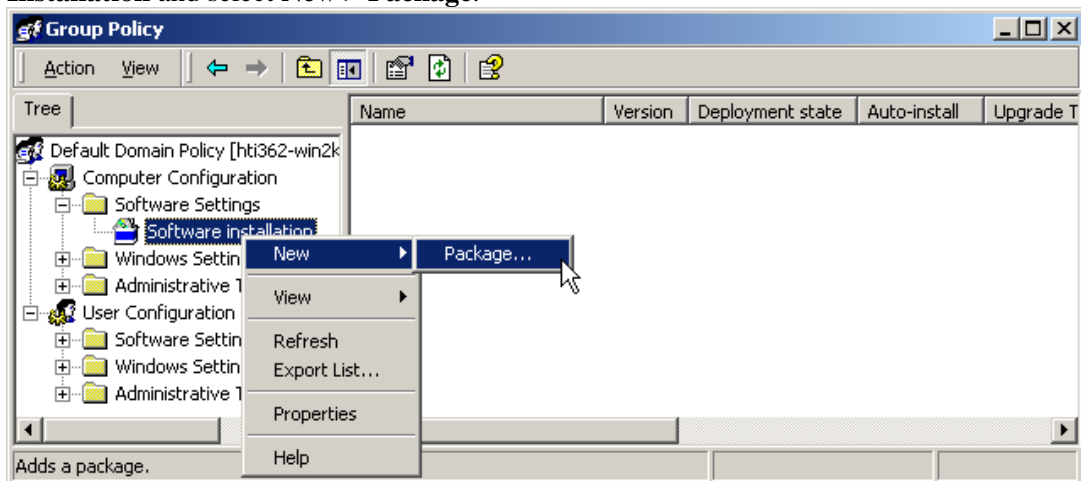
1. Run the *Active Directory Users and Computers* snap-in. Right-click on the domain and select **Properties**.



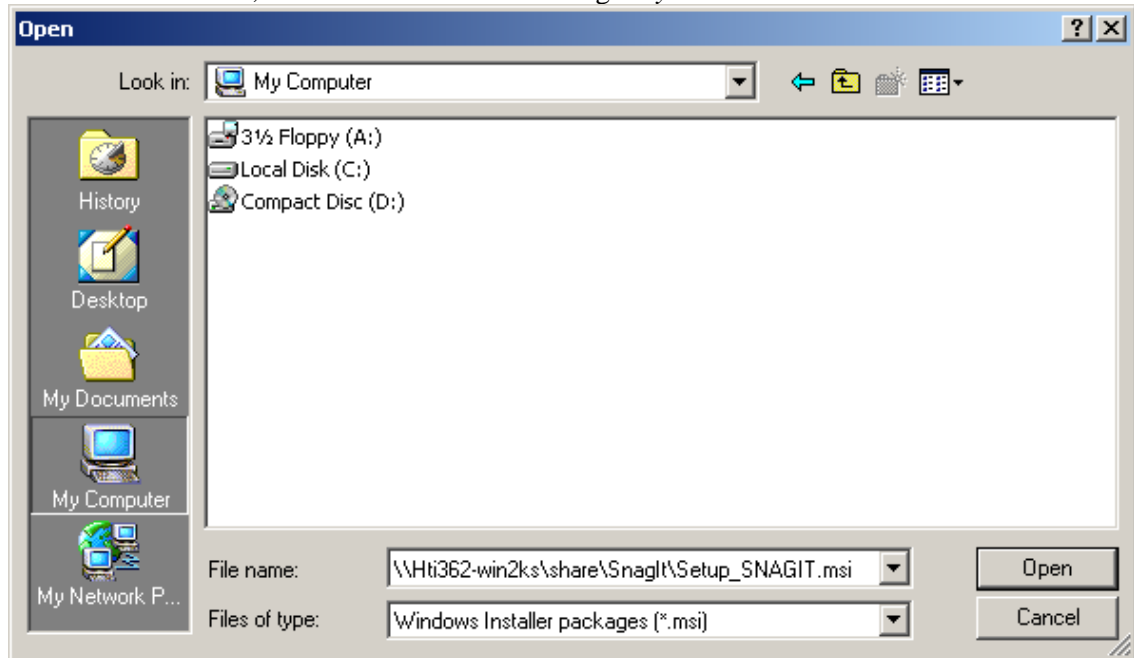
2. Select the *Group Policy* tab. Select the default domain policy and click **Edit**.



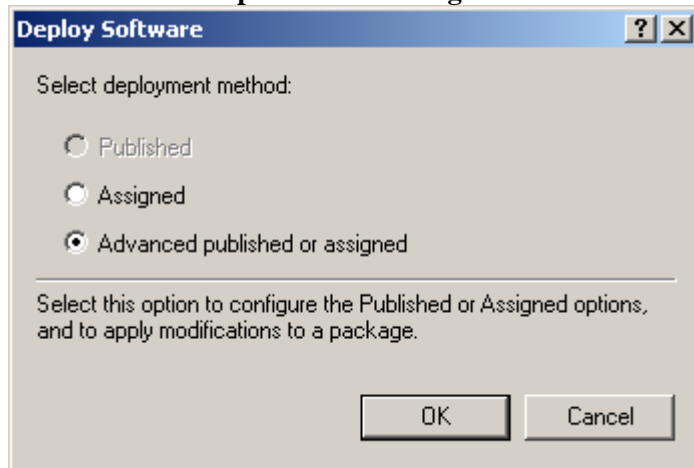
3. Expand *Software Settings* under *Computer Configuration*. Right-click on **Software Installation** and select **New > Package**.



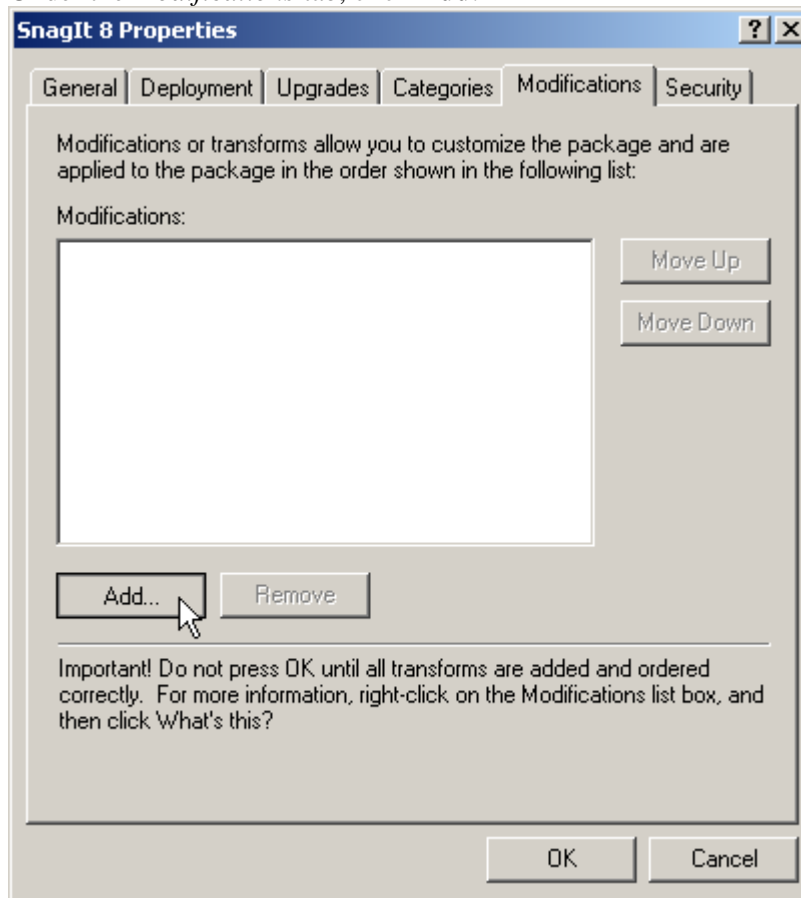
4. Type in the UNC path to the share. Note that this must be the full UNC path to the share, not a local drive. Or, browse to the location through *My Network Places*.



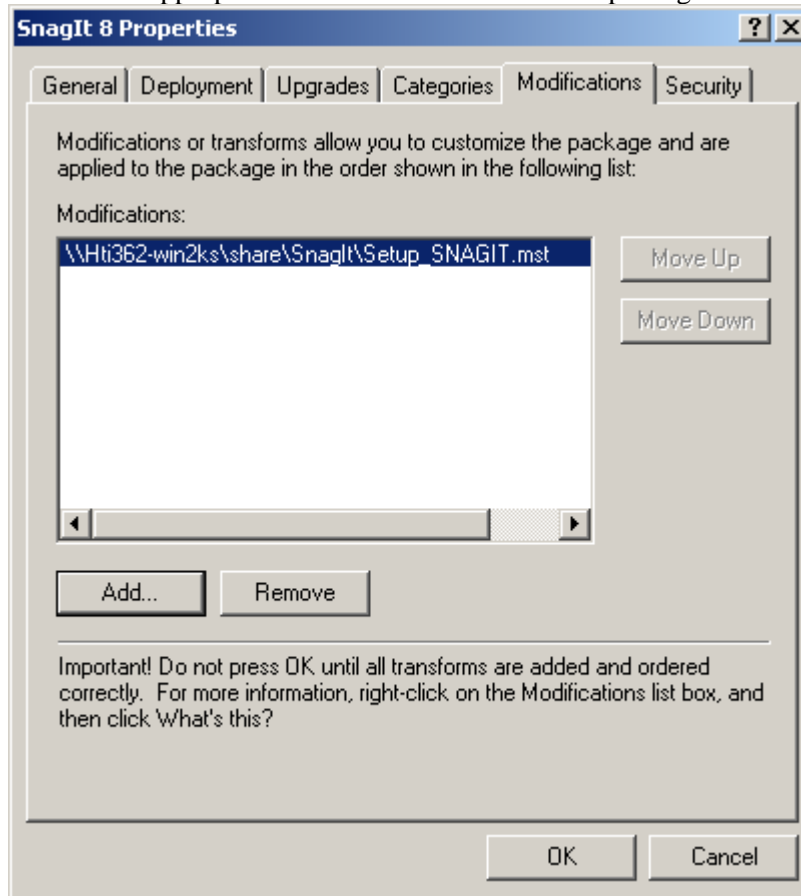
5. Choose **Advanced published or assigned**.



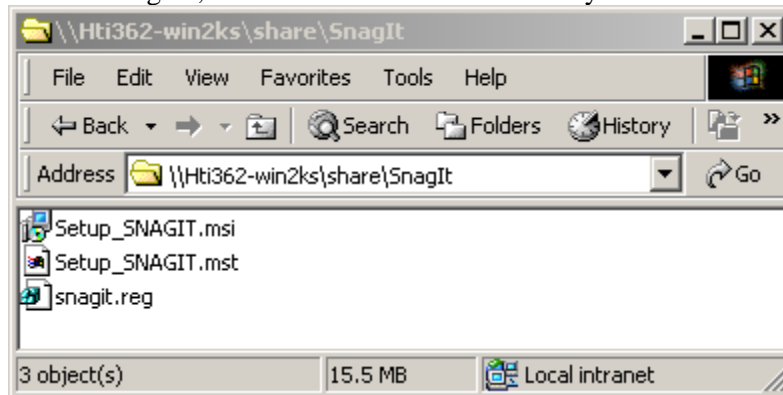
6. Under the *Modifications* tab, click **Add**.



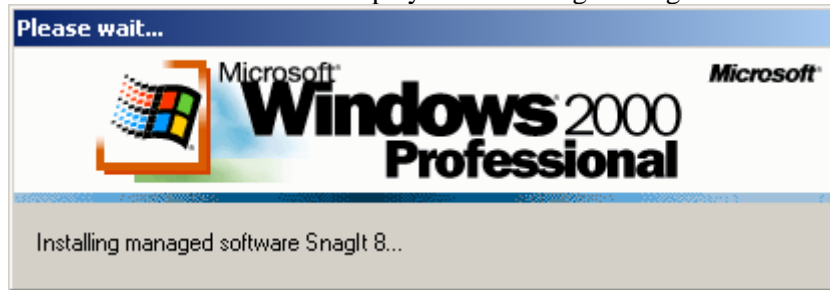
- Choose the appropriate MST files to transform the package.



- Click **OK**. Ensure that the *machine* accounts for the client machines have at least read access to the share.
- If desired, also place the *SnagIt.reg* file created earlier in the same directory as the installer. Again, ensure that the file is readable by the clients' machine accounts:



10. The client machines should display the following message on their next reboot:

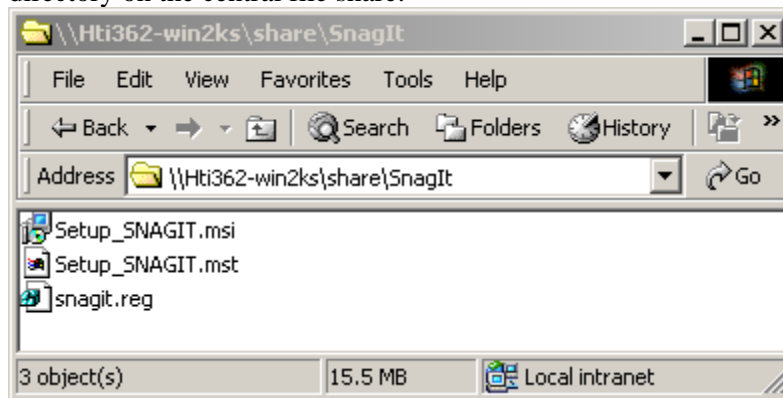


Any errors will be logged in *Event Viewer*. A common reason for installation failure is an unreadable package, transform, or *Snagit.reg* registry file. Ensure that the share and files are readable by the client's *machine* account.

Distributing Snagit Manually

If you do not have a Windows Server or another deployment mechanism, you can “manually” install *Snagit* using the command line. This could be placed in a batch file or a script you write.

1. Place the installer, *Snagit.reg*, and the *Wise InstallTailor*-generated transform in the same directory on the central file share:



Note that the installer searches for a file named “*Snagit.reg*” in the same directory as the original .MSI file and, if present, automatically installs it into the main *Snagit* installation directory.

2. The package and customizations can now be installed manually on the client machines using *msiexec*.
3. Any transforms (.mst files) are applied by specifying the transform filenames in the property TRANSFORMS on the *msiexec* command line. Multiple transform files are separated by semicolons.
4. To install Snagit without any user dialogs, applying a *Wise InstallTailor* transform named “*Setup_Snagit.mst*,” run the following command:

```
msiexec /i \\machine\share\Snagit\Setup_Snagit.msi
TRANSFORMS="Setup_Snagit.mst" /qn
```